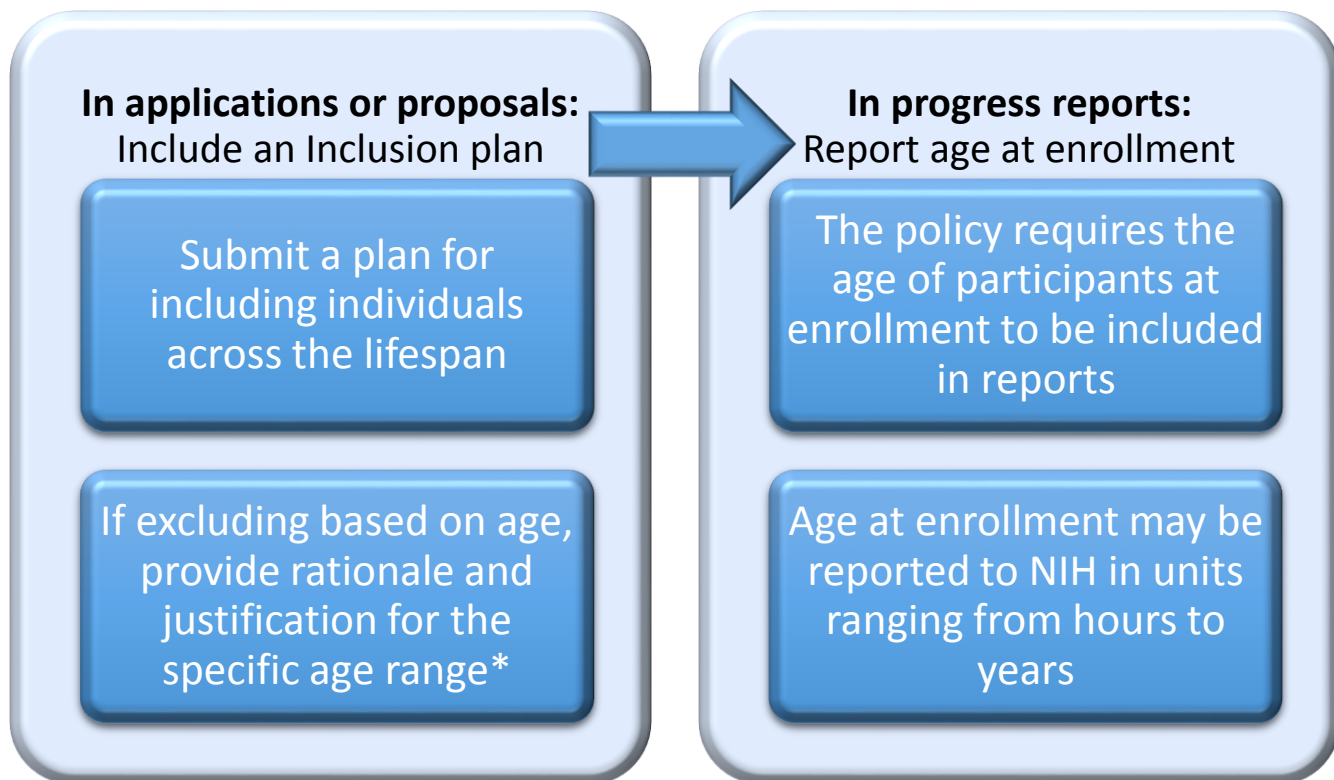


# Inclusion Across the Lifespan: guidance for applying the policy

The Inclusion Across the Lifespan policy (IAL) applies to *all exempt and non-exempt human subjects research* (see [NOT-OD-18-116](#)), beginning with competing grant applications due *on/after January 25, 2019*, and R&D contract solicitations issued on/after this date.

For ongoing, non-competing awards, the [Inclusion of Children in Research Policy](#) continues to be in effect.



Remember: Scientific Review Groups (SRGs) will assess each application/proposal as being "acceptable" or "unacceptable" with regard to the age-appropriate inclusion or exclusion of individuals in the research project.

**\*Exclusion based on age must be due to *ethical* or *scientific* reasons.** Acceptable justifications ***may*** include:

- The disease to be studied does not occur in the excluded age group
- The research topic is not relevant to the excluded age group
- Knowledge sought is already available for the excluded group
- Separate study for the excluded age group is warranted or preferable
- Research involves data from pre-enrolled participants
- Laws/regulations bar inclusion of individuals in a specific age group in research
- The study poses unacceptable risk to the excluded age group

For the purposes of the policy, a [child](#) is an individual under the age of 18. An [older adult](#) is an individual 65 years of age or older. For more information, visit the [Inclusion Across the Lifespan website](#).